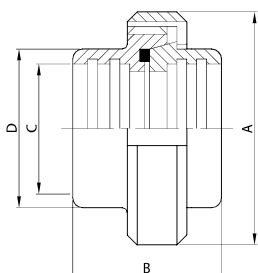




**RACCORDO MR.  
EG. UNION  
RACCORD DR.  
RACOR MR.**

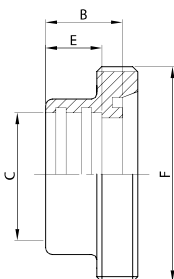
**100 D**



DN	A	B	C	D	gr
10	38,0	35,0	12,0	18,0	128
15	44,0	35,0	18,0	24,0	159
20	54,0	37,0	22,0	30,0	285
25	63,0	45,0	28,0	35,0	388
32	70,0	51,0	34,0	41,0	481
40	78,0	53,0	40,0	48,0	601
50	92,0	57,0	52,0	61,0	837
65	112,0	65,0	70,0	79,0	1.286
80	127,0	75,0	85,0	93,0	1.724
100	148,0	89,0	101,6	114,0	2.785
104	148,0	89,0	104,0	114,0	2.626

**BOCC. FILETTATO MR.  
EG. MALE PART  
NEZ FILETÉ DR.  
MACHO RACOR MR.**

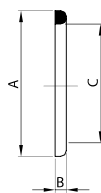
**101 D**



DN	B	C	E	F	gr
10	17,0	12,0	12,0	28-8	22
15	17,0	18,0	12,0	34-8	31
20	18,0	22,0	12,0	44-6	58
25	22,0	28,0	15,0	52-6	127
32	25,0	34,0	18,0	58-6	160
40	26,0	40,0	20,0	65-6	209
50	28,0	52,0	22,0	78-6	296
65	32,0	70,0	25,0	95-6	431
80	37,0	85,0	28,0	110-4	585
100	44,0	101,6	35,0	130-4	989
104	44,0	104,0	35,0	130-4	968

**GUARNIZIONE PER RACC.  
SEAL RING FOR UNION  
JOINT DE RACCORD  
JUNTA RACOR**

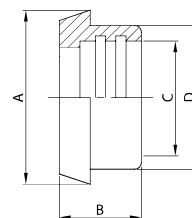
**131 D**



DN	A	B	C
10	20,0	4,0	12,0
15	26,0	4,0	18,0
20	33,0	4,0	23,0
25	40,0	5,0	30,0
32	46,0	5,0	36,0
40	52,0	5,0	42,0
50	64,0	5,0	54,0
65	81,0	5,0	71,0
80	95,0	5,0	85,0
100/104	114,0	5,0	104,0
125	142,0	6,0	130,0
150	167,0	6,0	155,0

**BOCC. CONICO MR.  
EG. TAPER PART  
DOUILLE DR.  
CASQUILLO RACOR MR.**

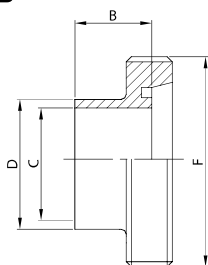
**111 D**



DN	A	B	C	D	gr
10	22,0	17,0	12,0	18,0	37
15	28,0	17,0	18,0	24,0	49
20	36,0	18,0	22,0	30,0	96
25	44,0	22,0	28,0	35,0	91
32	50,0	25,0	34,0	41,0	117
40	56,0	26,0	40,0	48,0	147
50	68,0	28,0	52,0	61,0	213
65	86,0	32,0	70,0	79,0	324
80	100,0	37,0	85,0	93,0	397
100	121,0	44,0	101,6	114,0	810
104	121,0	44,0	104,0	114,0	672

**BOCC. FILETTATO SR.  
WG. MALE PART  
NEZ FILETÉ SR.  
MACHO RACOR SR.**

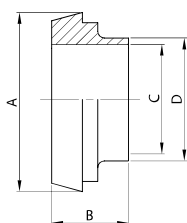
**102 D**



DN	B	C	D	F	gr
10	17,0	10,0	12,0	28-8	31
15	17,0	16,0	18,0	34-8	45
20	18,0	20,0	22,0	44-6	84
25	22,0	25,0	28,0	52-6	109
32	25,0	31,0	34,0	58-6	134
40	26,0	37,0	40,0	65-6	169
50	28,0	49,0	52,0	78-6	224
65	32,0	66,0	70,0	95-6	350
80	37,0	81,0	85,0	110-4	523
100	44,0	97,6	101,6	130-4	675
104	44,0	100,0	104,0	130-4	654

**BOCC. CONICO SR.  
WG. TAPER PART  
DOUILLE SR.  
CASQUILLO RACOR SR.**

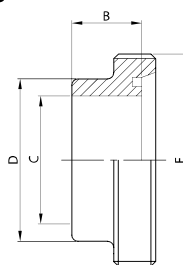
**112 D**



DN	A	B	C	D	gr
10	22,0	17,0	10,0	12,0	22
15	28,0	17,0	16,0	18,0	31
20	36,0	18,0	20,0	22,0	50
25	44,0	22,0	25,0	28,0	88
32	50,0	25,0	31,0	34,0	110
40	56,0	26,0	37,0	40,0	131
50	68,0	28,0	49,0	52,0	180
65	86,0	32,0	66,0	70,0	294
80	100,0	37,0	81,0	85,0	353
100	121,0	44,0	97,6	101,6	634
104	121,0	44,0	100,0	104,0	570

**BOCC. FILETT. GROSSO SP.  
WG. MALE PART  
NEZ FILETÉ SR.  
MACHO R. ESPESO SR.**

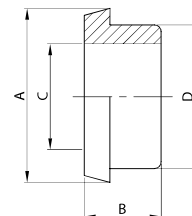
**117 D**



DN	B	C	D	F	gr
10	17,0	10,0	18,0	28-8	42
15	17,0	16,0	24,0	34-8	59
20	18,0	20,0	30,0	44-6	108
25	22,0	25,0	35,0	52-6	149
32	25,0	31,0	41,0	58-6	189
40	26,0	37,0	48,0	65-6	248
50	28,0	49,0	61,0	78-6	350
65	32,0	66,0	79,0	95-6	531
80	37,0	81,0	93,0	110-0	719
100	44,0	97,6	114,0	130-4	1.192
104	44,0	100,0	114,0	130-4	1.171
125	34,0	125,0	137,0	160-4	1.230
150	37,0	150,0	163,0	190-4	2.030

**BOCC. CONICO GROSSO SP.  
WG. THICK TAPER PART  
DOUILLE ÉPAISSE SR.  
CASQUILLO R. ESPESO SR.**

**119 D**



DN	A	B	C	D	gr
10	22,0	17,0	10,0	18,0	29
15	28,0	17,0	16,0	24,0	38
20	36,0	18,0	20,0	30,0	72
25	44,0	22,0	25,0	35,0	115
32	50,0	25,0	31,0	41,0	147
40	56,0	26,0	37,0	48,0	187
50	68,0	28,0	49,0	61,0	266
65	86,0	32,0	66,0	79,0	420
80	100,0	37,0	81,0	93,0	529
100	121,0	44,0	97,6	114,0	1.016
104	121,0	44,0	100,0	114,0	910
125	150,0	34,0	125,0	137,0	910
150	176,0	37,0	150,0	163,0	1.242